



RAISING THE BAR: ELEVATING CARE TO NEW HEIGHTS

CAPITAL CAMPAIGN | 2023





TABLE OF CONTENTS

We sincerely thank you for your invaluable support of Western Missouri Medical Center (WMMC) and the WMMC Foundation. We invite you to explore the pages of this booklet to discover the profound difference your contribution will make. Let's unite and raise the bar in healthcare together.

- **Message From Leadership**

- **Hospital History**

- **Mission, Vision, Values**

- **Community Benefit**

- **About Us**

- **Financial Snapshot**

- **About the Project**

- **How You Can Help**

MESSAGE FROM

HOSPITAL & FOUNDATION LEADERS



DARINDA DICK
PRESIDENT & CEO, WMMC

We are deeply grateful for your support as we embark on our capital campaign, Raising the Bar: Elevating Care to New Heights. Join us on this transformative journey to enhance healthcare services and make a lasting impact on our community.



TARA CARLYLE
STRATEGY & DEVELOPMENT EXECUTIVE, WMMC

Our shared vision at WMMC and the WMMC Foundation is to provide exceptional care and improve the well-being of every individual we serve. Through this campaign, we aim to raise the standard of care by bringing state-of-the-art Interventional Radiology (IR) services to WMMC, enabling us to offer advanced minimally invasive procedures and deliver more precise, targeted treatments for a range of medical conditions.



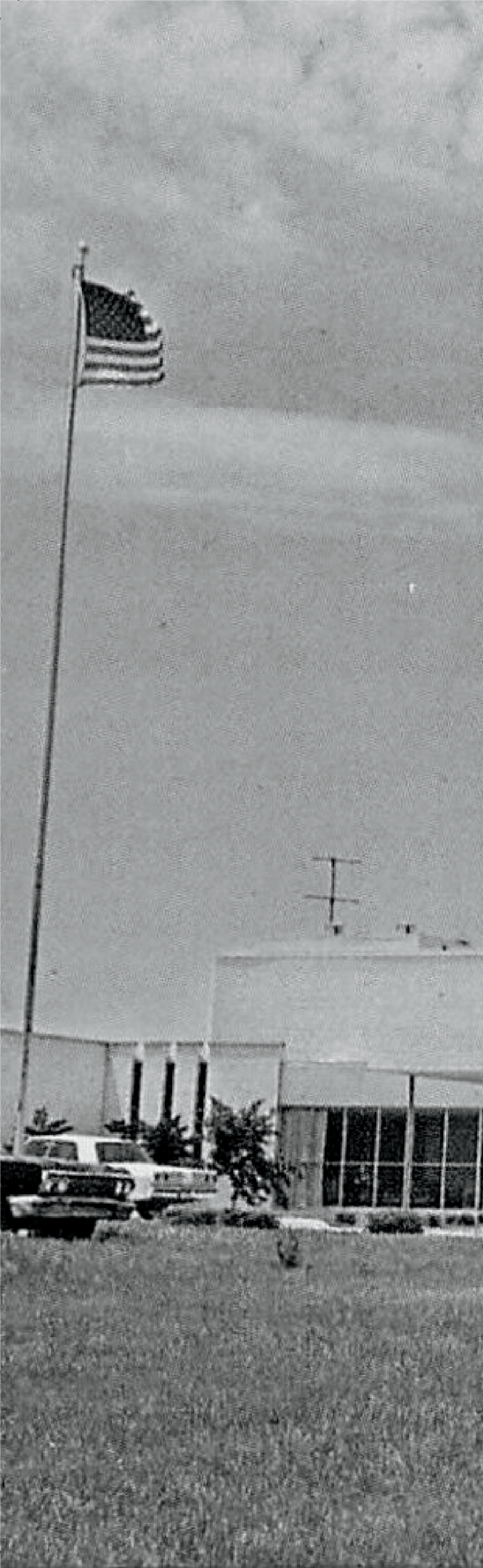
JAN GLOVER
PRESIDENT, WMMC FOUNDATION

Your generosity and belief in our mission will empower us to offer advanced diagnostic and treatment options, reducing patient recovery time and enhancing overall outcomes. Together, we can elevate healthcare to new heights and positively impact countless lives in our community.



JENNIE SNAPP
DIRECTOR, WMMC FOUNDATION

Our goal is to raise the necessary funds to begin construction in the first quarter of 2024 and we welcome your partnership in this endeavor. For more information on how you can assist with this project, please visit WMMC.com/RaisingTheBar.



HOSPITAL HISTORY

As we celebrate the 60th anniversary of WMMC, we reflect on its remarkable impact on our community. Over the past six decades, WMMC has remained steadfast in its commitment to delivering exceptional healthcare to the people of Johnson County and the surrounding areas. From earning national rankings and specialty designations to expanding its services, WMMC's track record of achievement exemplifies its unwavering dedication to excellence and community well-being.

Since its establishment in 1963, WMMC has continuously evolved and grown to meet the ever-changing healthcare needs of our region. Notably, the completion of the state-of-the-art \$51.5 million Patient Tower in 2011 and our advanced capabilities have solidified WMMC's position as a leading rural healthcare organization in west-central Missouri.

In 2022, WMMC proudly achieved a five-star overall rating from the Centers for Medicare & Medicaid (CMS), placing it among the top 13% of hospitals nationwide. This prestigious recognition is a testament to WMMC's exceptional performance across 47 quality measures in categories such as Mortality, Safety of Care, Readmission, Patient Experience, and Timely & Effective Care.

By exceeding national benchmarks in all five categories, WMMC has demonstrated its unwavering commitment to providing high-quality care to our community.

Additionally, WMMC has made significant investments in enhancing its facilities and services. The completion of the new Medical Office Building in 2014 has further expanded WMMC's capabilities. In 2019, the remodel of the Emergency Department improved patient care and privacy, while the recent upgrade to the Operating Rooms with state-of-the-art equipment has increased efficiency and cleanliness.

WMMC's steadfast dedication to putting patients and the community first has solidified its position as a strong, independent health system. With a comprehensive range of specialties and a commitment to meeting the healthcare needs of our community, WMMC will continue its upward trajectory, providing exceptional care for the next 60 years and beyond.

Together, as we embark on the Raising the Bar: Elevating Care to New Heights capital campaign, we invite you to join us in our mission to further enhance healthcare services and make a lasting impact on our community. With your support, we can ensure that WMMC remains at the forefront of healthcare innovation, delivering advanced care and improving the well-being of our patients.



**JOHNSON COUNTY
MEMORIAL HOSPITAL IN 1963**

WMMC MISSION, VISION, & VALUES

WMMC is a county-owned, not-for-profit healthcare provider. As one of the largest employers in Warrensburg, WMMC employs nearly 750 people and provides over \$49.7 million in annual salaries.

MISSION

Work as one to serve our community with excellence and compassion.

VISION

Create a legacy of commitment to exceptional patient and employee experiences.

VALUES

- COMPASSION
 - Care delivered with kindness, with respect, and without judgment.
- COLLABORATION
 - Build and nurture meaningful relations to work together.
- COURAGE
 - Advocate for the best interest of our patients, employees, community, and WMMC.



WMMC EMERGENCY DEPARTMENT STAFF

COMMUNITY BENEFIT

for Western Missouri Medical Center in 2022

DELIVERIES: 624

ADMISSIONS: 3,026

EMERGENCY VISITS: 22,110

OUTPATIENT VISITS: 86,226

CLINIC VISITS: 138,002

CT SCANS: 11,924

PET SCANS: 144

COMMUNITY BENEFIT: \$13,603,829

Community Benefit: Bad debt and charity care that is provided to our greater community. Tax dollars that WMMC receives from the county total right around \$1 million, which is less than one month's worth of charity care and bad debt.

ABOUT THE FOUNDATION

The WMMC Foundation (formerly Friends of WMMC) promotes community awareness and a philanthropic culture to support the WMMC mission to work as one to serve our community with excellence and compassion.

Our work ensures the availability of modern facilities and the most advanced technology right here at home, without the need to travel for care.

Starting in 2015 and continuing into 2016, the WMMC Foundation began a reorganization process. Part of this process was to form six committees comprising over 70 community leaders. Each committee is charged with answering the call to meet the growing healthcare needs of those we serve – our families, our friends, and our neighbors. This reorganization has sharpened our focus in the specific areas of philanthropy and donor stewardship.

Since 2017, over \$1 million has been raised and redistributed to areas of the hospital that are in the most critical need.



FINANCIAL FIGURES

Projects that have been funded by donors of the WMMC Foundation since 2017

EMPLOYEES 138 Employee Relief Funds have been distributed, which are grants given to employees in a time of need. \$102,300	CANCER CARE Endobronchial Ultrasound Bronchoscopy (EBUS) machine, portable ultrasound, and radioactive navigator. \$350,000	EMERGENCY CARE Remodel of the WMMC ER, including added security, equipment privacy and fast-track rooms. \$260,000
PAIN CENTER A Radio Frequency Ablation (RFA) was purchased for the Pain Center. \$100,000	OPERATING ROOMS Remodel of the WMMC OR's and purchase of SteriTite containers to reduce overall waste and cost. \$250,000	COMMUNITY In-patient mattresses, phone charging stations, breathing systems, mental health software and baby changing stations. \$57,500

TOTAL DISTRIBUTED: \$1,122,600

As of December 31, 2022



WMMC FOUNDATION BOARD & STAFF MEMBERS



CAPITAL CAMPAIGN

RAISING THE BAR: ELEVATING CARE TO NEW HEIGHTS

The WMMC Foundation has launched its most extensive capital campaign to raise \$1 million to bring innovative technology to our community through Interventional Radiology (IR). This technology uses medical imaging to guide minimally invasive surgical procedures that diagnose, treat, cure, and more. Additionally, WMMC will house the only PET/CT scanner in our region.

This campaign will elevate the care we provide in three fundamental areas: cancer, stroke, and cardiovascular care.

Campaign Highlights:



New PET/CT machine

We will bring a new, state-of-the-art PET/CT machine with the latest imaging technology and IR components



Jobs & Revenue

This campaign will generate both new job opportunities at WMMC and revenue for the medical center



Renovations

A remodeled area to fit this new machine and a new space to serve our Gastrointestinal (GI) patients

WHAT IS INTERVENTIONAL RADIOLOGY?

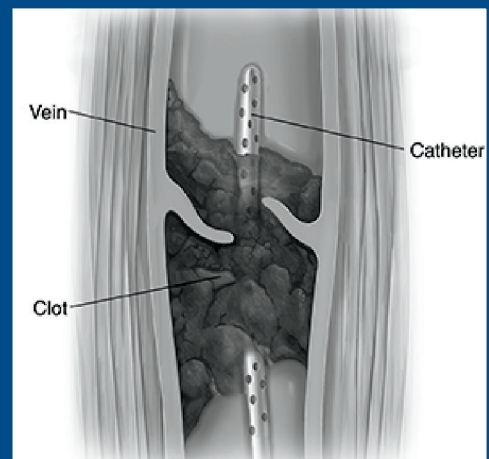
According to United Nations population estimates, 16% of the world's population will be older than 65 by 2050, indicating a rising need for safer, more efficient, and less expensive medical procedures. Interventional Radiology (IR) is an exciting and growing medical specialty that enables doctors to:

- Perform surgical procedures to diagnose
- Treat and cure a variety of conditions in a minimally invasive way
- Use a combination of catheter-based procedures and imaging technology, such as ultrasound and digital X-ray, to diagnose and treat disease
- Focus on blood vessels and the lymphatic system
- Treat a wide range of conditions from cancer to infertility
- Offer an alternative to procedures that once required open surgery

IR APPLICATIONS

From a single incision, interventional technologists and radiologists can work together to:

- Find and stop internal bleeding
- Locate and treat uterine fibroids
- Remove blockages (biliary drainage)
- Unblock blood vessels and arteries (angioplasty)
- Eliminate tumors (thermoablation)



BENEFITS FOR PATIENTS

Benefits of interventional radiology for patients compared to traditional surgery include:

- Increased effectiveness
- Reduced risks
- Outpatient vs. inpatient Stay
- Lower costs
- Less pain and quicker recovery times

MEET THE MACHINE

GE DISCOVERY 710 16 SLICE PET/CT SCANNER



WHAT IS A PET/CT MACHINE?

A positron emission tomography (PET) scan is an imaging test that can help reveal your tissues and organs' metabolic or biochemical function. The PET scan uses a radioactive drug called a tracer to show both typical and atypical metabolic activity. A PET scan can often detect the atypical metabolism of the tracer in diseases before the disease shows up on other imaging tests, such as computerized tomography (CT).

The tracer is often injected into a vein within your hand or arm. The tracer will then collect into areas of your body with higher metabolic or biochemical activity levels. This often pinpoints the location of the disease.

WHY IS A PET/CT NEEDED IN OUR COMMUNITY?

A PET scan is an effective way to help discover a variety of conditions, including cancer, heart disease and brain disorders. Your health care provider can use this information to help diagnose, monitor or treat your condition. Currently, there is no hospital in our region that houses an on-site PET machine. Instead, it is common to rent a PET scanner once a week that is housed in a trailer. This will not only reduce the financial burden on our hospital who pays to rent the machine, but will also allow this service to be utilized more than one day a week.

WHAT SETS THIS MACHINE APART?

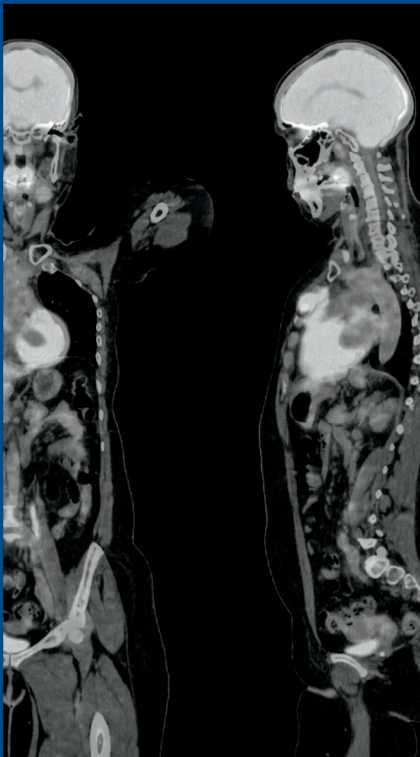
This new scanner is a high-resolution PET/CT scanner with 16-slice image acquisition as well as 2D and 3D imaging capability. This scanner features improved lesion detectability, faster scan times, increased throughput, and reduced dose requirements.

The scanner will allow our providers to:

- Accurately identify tumor boundaries and concentrate radiation only to save viable tissue from radiation exposure
- Detect lesions as small as 2.88 mm (find metastasizing cancer sooner)
- Better scan organs like the lungs and heart
- Accurately detect multiple small lesions in areas of the body subject to movement, especially valuable for breast, lung, colon, renal and prostate cancers

MAJOR BENEFITS:

- Excellent Movement Management Imaging
- Fast Exam Time
- Seamless Clinical Workflow
- High Quality Images



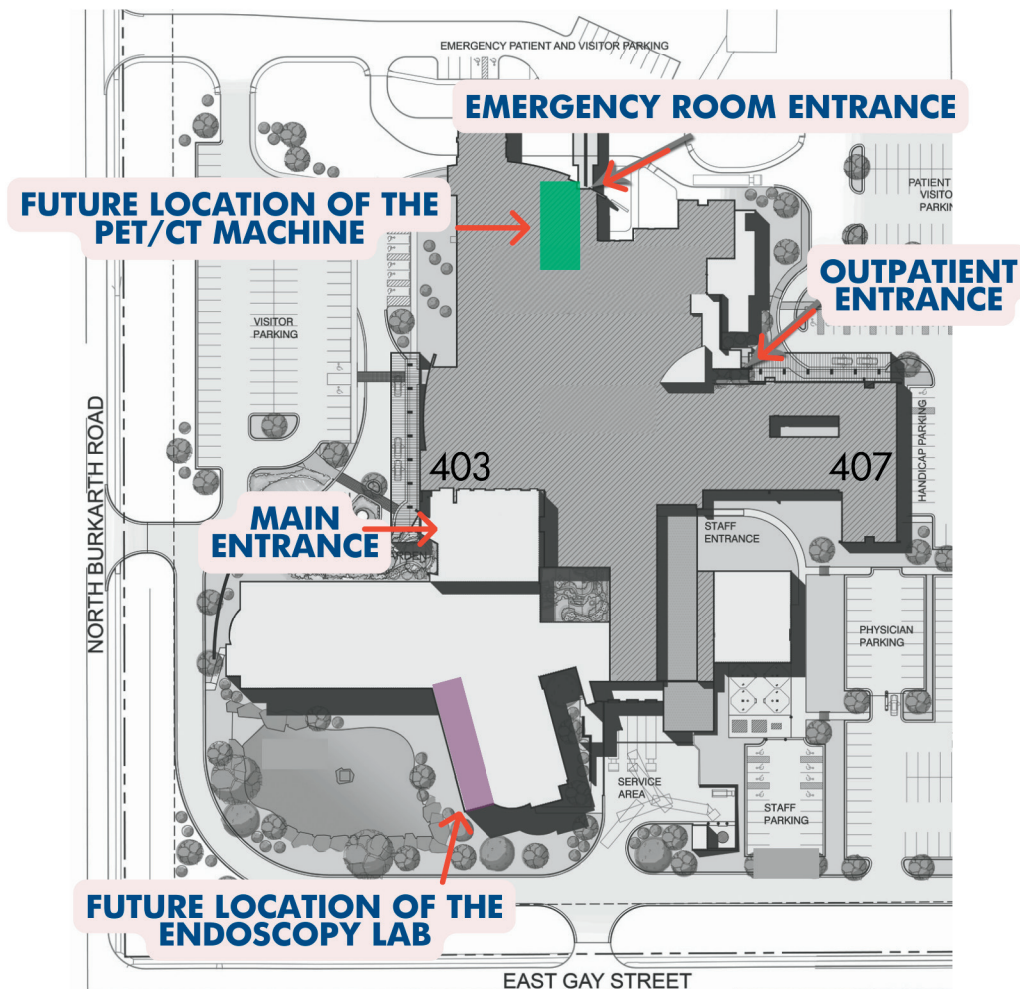
COMMON USES OF THE PET/CT

Doctors perform PET/CT scans to:

- Detect cancer and/or make a diagnosis; determine whether a cancer has spread
- Assess the effectiveness of treatment
- Evaluate prognosis
- Assess tissue metabolism and viability
- Determine the effects of a heart attack myocardial infarction on areas of the heart
- Identify areas of the heart muscle that would benefit from angioplasty or coronary artery bypass surgery
- Evaluate brain abnormalities, such as tumors, memory disorders, seizures and other central nervous system disorders
- Map normal human brain and heart function

WHERE WILL THE NEW MACHINE BE LOCATED?

The new PET/CT machine will be located in the current Endoscopy Lab, which is situated between the Emergency Department (ED) and the Diagnostic Imaging (DI) Department, directly adjacent to the operating rooms. This space is where procedures like colonoscopies and EGDs are conducted and is denoted on the map in **green**.



We will move the Endoscopy Lab to the vacant unit previously known as the Behavioral Health Unit (BHU). This vacant space provides the necessary room to establish an intervention lab alongside the Endoscopy Lab. This area is denoted in **purple** on the map.

This move will offer several advantages such as:

- **Efficient Workflow:** Providers and medical staff can easily move between the operating rooms, the GI lab, and the intervention lab.
- **Enhanced Patient Services:** The intervention lab will allow for advanced procedures that weren't previously feasible due to spatial limitations, such as cauterizing arteries, biopsies, and more intricate diagnostic and treatment procedures.

HOW YOU CAN HELP

BECAUSE WE VALUE EVERY GIFT SO GREATLY, WE OFFER MANY WAYS TO GIVE. FIND THE GIFT THAT'S RIGHT FOR YOU.

- Annual Donations
 - Gifts of current assets provide essential support to our programs and initiatives. These may include cash gifts (check, credit card, wire transfer, IRA charitable qualified distributions), stocks, and bonds
- Memorials & Grateful Patient Donations
 - Many families decide to establish a memorial for their loved one and direct gifts in lieu of gifts or flowers
 - Grateful Patient donations can be made to thank a nurse, doctor, or other staff person at WMMC for their exceptional care
- Legacy Giving
 - When you make a planned gift to the WMMC Foundation, you support the future of quality health and care in our community.
 - Gift of Securities
 - Redirect your taxes to benefit your family and your community
 - Gift by bequest or estate plan
 - Include the WMMC Foundation in your will or living trust, or name the WMMC Foundation as a beneficiary of a retirement plan or life insurance policy
- Corporate Giving and Event Sponsorship

Checks, securities, deeds, bequests, and other legal documents should be made payable or transferable to Western Missouri Medical Center Foundation. The WMMC Foundation is certified as a 501(c)(3) and 509(a)(3) organization. Gifts are tax-deductible to the fullest extent of the law. For additional questions, please contact Jennie Snapp, Foundation Director, at (660) 262-7464 or jsnapp@wmmc.com.

Please mail your donation to:

Western Missouri Medical Center Foundation
Attn: Communications & Development Office
403 Burkarth Road
Warrensburg, MO 64093

SCAN ME



TO GIVE ONLINE

CONTACT INFORMATION

Your questions and concerns are important to us. Please reach out to our team for assistance.



(660) 262-7464



foundation@wmmc.com



WMMC.com/Foundation

**Visit [WMMC.com/RaisingTheBar](https://www.wmmc.com/RaisingTheBar)
to learn more about our project**

