



WESTERN MISSOURI  
MEDICAL CENTER  
FOUNDATION

presents

# FIRE & ICE: PROM ERAS

A Night to Remember

01.26.2024 | 6:00 p.m.

Milestones Barn

Thank you to our Premier Sponsor



# a Thank You to our Sponsors

The Western Missouri Medical Center Foundation promotes community awareness and a philanthropic culture to support the WMMC mission to work as one to serve our community with excellence and compassion.

Our work ensures the availability of modern facilities and the most advanced cutting-edge technology right here at home, without the need to travel for care.

Through generous gifts of all sizes, the WMMC Foundation continues its mission and provides for the well-being of our community.

To learn more about the Foundation, visit  
**WMMC.com/Foundation**

Special thanks to Awesome Blossoms and 89 Design for helping provide the elegant décor; the Nutritional Services staff at WMMC for providing a decadent dining experience; Heroes for the bar service; Chad Davis and James Bell for providing auctioneer services tonight; and Nancy with Milestones Bar for offering such a beautiful venue to our community.

## HIGH ROLLER SPONSORS



## ROYAL FLUSH SPONSORS



## SNAKE EYES SPONSORS



*Jonna D. Albert*  
*Accounting &*  
*Tax LLC*



## ACE IN THE HOLE SPONSORS



UNIVERSITY OF  
CENTRAL MISSOURI  
ALUMNI • FOUNDATION



# TONIGHT'S EVENTS



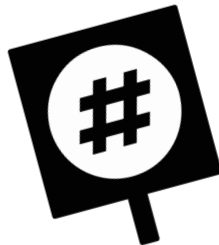
6:00 PM  
COCKTAILS &  
LIGHT  
APPETIZERS



6:30 PM  
GAMING  
BEGINS &  
HEAVY HOR  
D'OEUVRES



9:00 PM  
PROGRAM  
BEGINS



9:30 PM  
LIVE  
AUCTION

**THANK YOU FOR HELPING  
US ADVANCE HEALTH CARE  
CLOSER TO HOME.**

## Rules

Buybacks (Suggested Donation)  
\$20 = \$5,000 chips

## Prizes

Gaming Prizes  
\$1,000 chips = 1 raffle ticket  
\$5 = 1 raffle ticket  
\$20 = 5 raffle tickets

## Golden Ticket

VALUE: \$500 - \$1,000  
\$10 = 1 ticket  
\$20 = 3 tickets  
\$100 = 20 tickets

### Golden Ticket Items:

- \$1,000 in travel credit donated by Central Bank of Warrensburg
- Three meat bundles from Cuttin'up Custom Meat Processing with a \$500 value
- Booze & Brumate Cooler donated by Stacey & Holly Fitterer and the WMMC Executives



# A STRONG

# Foundation

## WMMC FOUNDATION'S PILLAR SOCIETY ANNOUNCES SIGNIFICANT MILESTONE

The WMMC Foundation proudly announces a significant milestone in its philanthropic journey: attaining over 100 dedicated members in the esteemed Pillar Society. This accomplishment stands as a testament to the unwavering commitment and generosity of our community toward advancing healthcare excellence.

The Pillar Society, a beacon of generosity within the Major Gifts Committee, celebrates the contributions of individuals whose support ranges from \$5,000 to \$50,000, payable over up to ten years. These contributions significantly aid WMMC in fulfilling its mission to enhance the health and well-being of our community.

Jeffrey Bellamy, Chair of the Pillar Society, expressed enthusiasm for the Foundation's milestone, stating, "It's been an exciting year for the WMMC Foundation; the Pillar Society has reached 102 members with pledges generating over a million dollars to date." Bellamy added, "Our work continues in 2024 with the focus on completing the Capital Campaign, 'Raising the Bar: Elevating Care to New Heights,' to bring a new Positron Emission Tomography and Computed Tomography (PET/CT) to WMMC. Many thanks to those who support the foundation and WMMC."

Jan Glover, WMMC Foundation Board President, extended heartfelt gratitude to the community, remarking, "We are so grateful to have the support of so many 'investors' in WMMC through the WMMC Foundation. This truly speaks to how much our community and county residents value quality healthcare right here at home." Glover continued, "We look forward to the continued growth of the Pillar Society and the ongoing positive impact the Foundation will have for years to come."

To date, there are 102 Pillar Society members with a total of \$1,085,800 pledged. Since its rejuvenation in 2017, the WMMC Foundation has been instrumental in funding initiatives exceeding \$1,400,000. These endeavors include pivotal capital campaigns, procurement of essential medical equipment, and over 189 Employee Relief Funds, providing crucial aid to WMMC employees during times of need.

# 2024 Live Auction

## #1: Stress-Free Thanksgiving Meal

**VALUE: \$360** Take the stress out of Thanksgiving with this indulgent and hassle-free dining experience. Let Charlie Rutt work his culinary magic as he expertly smokes a succulent turkey to perfection. In addition to the star of the show, Heroes Restaurant & Pub will craft a delightful spread of your favorite Thanksgiving side dishes, including mashed potatoes, stuffing, green bean casserole, salad, and rolls. The feast doesn't end there; indulge your sweet tooth with a delectable pumpkin cheesecake as the perfect finale to your holiday meal. This ready-to-go Thanksgiving feast is designed for 10-12 people. **DONATED BY: Charlie Rutt & Jay Meldrem**

## #2: Whiskey & Wine Bundle

**VALUE: \$400** Elevate your spirits with this exquisite Wine & Whiskey Bundle, a connoisseur's dream collection. Delight in the rich and complex flavors of Woodford Whiskey and Basil Hayden Whiskey, each bottle meticulously selected to enhance your sipping experience. Indulge in the velvety notes of Silver Oak Cabernet Sauvignon and the bold character of Alexander's Crown Cabernet Sauvignon, creating a perfect balance for wine enthusiasts. This bundle also includes two stylish Yeti Stemless Wine Glasses and two durable Yeti Ramblers, ensuring that your favorite beverages are enjoyed at the perfect temperature. **DONATED BY: Kevin & Sarah Smarr**

## #3: Isiah Pacheco Signed Photo

**VALUE: \$1,800** Celebrate the legacy of Isiah Pacheco, fondly known as "Pop," with the Isiah Pacheco Signed Photo - a true gem authenticated for its genuine autograph. This professionally framed 16x20-inch photo captures a defining moment in the illustrious career of Isiah Pacheco, American football running back for the Kansas City Chiefs. Before making his mark in the NFL, Pacheco showcased his exceptional talent playing college football for the Rutgers Scarlet Knights. His remarkable skills and dedication to the game led to his selection by the Chiefs in the seventh round of the 2022 NFL Draft. **DONATED BY: Anonymous Donor**

## #4: Finest Elixirs Collection

**VALUE: \$400** Savor exceptional spirits with the Casa Dragones Tequila Joven and Blanton's Bourbon Bundle. Casa Dragones, known as the world's finest sipping tequila, is a limited edition, rare 100% Blue Agave Joven Tequila. The gentle blend of silver tequila and extra anejo creates a smooth taste with clean notes of vanilla and spiced undertones. Blanton's Bourbon, taken from the center-cut of Warehouse H, was initially reserved for VIPs and offers a sweet palate with hints of citrus and oak. Best served neat or on the rocks, this extraordinary blend is bottled at 46.5% alcohol by volume, ensuring a remarkable sipping experience. **DONATED BY: Anonymous Donor**

# uction Items

## #5: Backyard BBQ Bundle

**VALUE: \$450** Experience the authentic flavors of Texas with this fully-prepared Texas-style BBQ meal from the culinary expertise of Adam Sommer. This Texas-sized feast is designed to feed 20-30 people, making it the perfect excuse to gather friends and family for a memorable dining experience. Indulge in the mouthwatering goodness of BBQ brisket and pulled pork, expertly prepared to perfection. Customize your feast with a choice of two sides, slaw toppings, buns, and sauce, ensuring a personalized and satisfying meal for everyone. **DISCLAIMER:** Local pick-up or drop-off only, and arrangements must be made in advance, excluding July 2-5. Allow for 24 hours of preparation to ensure the highest quality culinary experience.

**DONATED BY: Adam & Amanda Sommer**

## #6: Blackstone Grill Bundle

**VALUE: \$500** Enhance your outdoor cooking experience with the Blackstone Grill Bundle, a comprehensive set that combines convenience and culinary excellence. The centerpiece of this bundle is the fully assembled 28" Blackstone Griddle complete with a Hood and Front Shelf, offering a versatile cooking surface for a variety of delicious meals. Protect your investment with the included Griddle Cover, ensuring your griddle remains in top-notch condition.

The Griddle Tool Set and Griddle Seasoning provide you with the essentials for perfecting your culinary creations. Additionally, the Burger Smasher allows you to craft the perfect burgers with ease. Valued at \$500, this bundle is a must-have for grilling enthusiasts, offering both functionality and quality. **DONATED BY: Dr. Dave & Jan Glover**

## #7: Travis Kelce Signed Football

**VALUE: PRICELESS** Immerse yourself in the spirit of football fandom with the Travis Kelce Signed Custom Chiefs Football. This unique piece of sports memorabilia boasts the genuine autograph of Travis Kelce, a prominent NFL player renowned for his contributions to the Kansas City Chiefs. The football itself is an official Chiefs custom football, elevating its status as a prized collectible for enthusiasts. Accompanied by a certificate of authenticity for verification, this signed football is not only ideal for Kansas City Chiefs fans but also serves as a standout item for football enthusiasts. Whether displayed in homes, offices, or sports-themed spaces, this custom football becomes a tangible tribute to Kelce's achievements, making it a valuable addition to any sports memorabilia collection. **DONATED BY: Anonymous Donor**

# 2024 Live A

## #8: Wine Connoisseur's Delight

**VALUE: \$535** Indulge in the luxurious world of wine and elegance with the "Ultimate Wine Connoisseur's Delight," a curated collection valued at \$535. This exquisite set includes an 8-piece Rabbit Electric Wine Set for effortless wine opening and serving. Enhance your sipping experience with a set of 4 Riedel Wine Glasses, perfectly complemented by an Ice Bucket for chilling your favorite bottles. Dive into the world of fine chocolates with delectable Godiva treats. The stellar wine selection features 2 Bottles of Veuve Clicquot - Brut Yellow Label, Ramey Chardonnay 2021, Albino Armani 1607 Grave Pinot Grigio (Friuli), and Harebrained Napa Valley Cabernet 2020. Conclude your tasting journey with the Amici Pinot Noir Russian River Valley 2021. Elevate your evenings with this opulent collection, designed for the true wine enthusiast. **DONATED BY: F & C Bank**

## #9: Golfing at Lion's Gate

**VALUE: \$850** Embark on a golfing adventure (4 rounds to be exact!) at Lion's Gate, a meticulously designed course by golf legend Jack Nicklaus. Known for its well-trimmed fairways and strategically placed bunkers, Lion's Gate offers a challenging yet rewarding experience. The course features unique elements like the ninth hole with dual fairways and the 18th hole tempting players with fairway bunkers.

Coupled with this golf experience is the Player+ GPS Touch Screen Golf Speaker, a revolutionary device powered by the Blue Tees Game App. Providing access to over 40,000 courses, this speaker enhances your golfing journey with an out-of-this-world sound experience! **DISCLAIMER:** Only available Tue-Thurs after 12 p.m. **DONATED BY: Mark Simpson & Perry Russell**

## #10: ReDefine Yourself

**VALUE: \$1,800** The Premier Wellness-Treatments Bundle from ReDefine Medical Spa! Elevate your skincare routine with the Obagi Nu-Derm Transformation System and Tretinoin, carefully curated to rejuvenate and revitalize your skin. With a year-long Glow membership at ReDefine, pamper yourself with exclusive perks, including a 10% discount on all services and products, special pricing on toxins like Botox and Xeomin, and the choice of additional monthly treatments such as Express Facials, IV Infusions, laser hair reduction, or IPL facial/spot treatments. This comprehensive package, generously donated by ReDefine Medical Spa, invites you to embrace a year of unparalleled wellness and aesthetic care. **DONATED BY: ReDefine Medical Spa**

# uction Items

## #11: Travis Kelce Jersey

**VALUE: PRICELESS** Boost your sports memorabilia collection with the Signed and Framed Travis Kelce Jersey, a true testament to the football prowess of this renowned Kansas City Chiefs player. Bearing the genuine autograph of Travis Kelce, this authentic Nike jersey measures 36 by 44 inches, making it a substantial and impactful addition. Professionally framed to ensure an elegant and display-ready presentation, the jersey features two accompanying photos of Travis Kelce, creating a visually captivating ensemble. Including a certificate of authenticity adds an extra layer of assurance, solidifying its status as a unique and valuable piece of sports memorabilia. Tailored for Kansas City Chiefs fans and football enthusiasts alike, this framed jersey is perfect for showcasing in homes, offices, or any sports-themed spaces. **DONATED BY: Anonymous Donor**

## #12: Lake of the Ozarks Luxury

**VALUE: PRICELESS** Embark on a tranquil lakeside getaway with the "Lakeview Retreat at The Cypress," offering a lavish four-night stay at this premier destination in Sunrise Beach. This spacious 4-bedroom, 4-bathroom, 3,400 sq. ft. condo provides the ultimate in comfort, accommodating up to ten guests. Revel in the breathtaking scenery as you gaze upon a

picturesque six-mile lake view from the expansive 1,000 sq. ft. 9th-floor deck, creating the perfect setting for enjoying both sunrise and sunset over the tranquil lake waters. Immerse yourself in the serenity of this lakeside haven, where relaxation meets luxury, providing an unforgettable escape from the everyday. **DISCLAIMER:** Excludes Holiday Weekends. **DONATED BY: Bill & Gina Carlyle**

## #13: Handcrafted Charcuterie Board

**VALUE: PRICELESS** Elevate your dining experience with this exquisite Handcrafted charcuterie board, a true masterpiece by the talented artisan Lynn Solomon. Meticulously crafted from the finest walnut and cherry wood, this one-of-a-kind board spans an impressive 21 inches, showcasing its functional prowess and aesthetic brilliance. Lynn Solomon's unparalleled craftsmanship is evident in every detail, making this charcuterie board a unique and timeless addition to any home. Whether used for serving a delightful array of cheeses or as an elegant centerpiece, this board seamlessly combines functionality with artistry. The marriage of high-quality materials and Lynn Solomon's artistic touch creates a piece that transcends its utility, adding a touch of sophistication to your dining occasions. Truly priceless, this handcrafted charcuterie board is a testament to the dedication and skill of its creator. **DONATED BY: Lynn & Mary Solomon**

# 2024 Live Auction

## #14: Sailing in Hilton Head, SC

**VALUE: \$2,000** Indulge in the epitome of opulence with this enchanting experience package, seamlessly intertwining moments of tranquility and exhilaration. Immerse yourself in a luxurious two-night stay amidst the scenic beauty of Hilton Head, South Carolina, where sun-kissed beaches and serene surroundings set the stage for a rejuvenating escape.

The centerpiece of this extraordinary package is an exhilarating Afternoon Sail Adventure on an America's Cup Sailboat, a journey for two that promises to be both invigorating and unforgettable. Glide over pristine waters, feel the refreshing sea breeze, and craft memories that will linger in your heart for a lifetime.

To elevate your journey, we've thoughtfully included a \$500 Delta Air Lines gift card, allowing you to travel at your convenience and explore the world beyond. This exclusive experience is a harmonious blend of coastal beauty and high-seas excitement, offering a perfect escape from the ordinary. Whether you seek relaxation on sandy shores or adventure on the open waters, this curated package ensures a unique and lavish retreat that transcends the ordinary. **DONATED BY: Dr. Mark Pluym & Amira Ghazali (Trip) and Dr. Chris & Megan Wittgren (Flights)**

## #15: Signed Dawson & Mahomes

**VALUE: PRICELESS** Immerse yourself in the rich history and contemporary excellence of football with this exceptional 22x32 item signed by two legends of the game – Len Dawson and Patrick Mahomes. Len Dawson, a Hall of Fame quarterback, is a revered figure in the football world, known for his outstanding career, leadership, and achievements. Paired with him is the contemporary maestro, Patrick Mahomes, whose dynamic and game-changing prowess has taken the football world by storm.

This unique item not only bears the authentic signatures of both Len Dawson and Patrick Mahomes but is also accompanied by two framed photos capturing the iconic "Choir Huddle." This distinctive huddle, frozen in time, represents the convergence of football greatness across generations. Len Dawson, with his Hall of Fame legacy, and Patrick Mahomes, a modern icon, have left an indelible mark on the sport.

Professionally framed for an elegant presentation, this memorabilia piece becomes a centerpiece for any sports enthusiast or collector. **DONATED BY: Anonymous Donor**

# uction Items

## #16: Roberto Coin Necklace

**VALUE: \$3,000** Delight in the sheer elegance and timeless allure of the 18K Rose Gold Carnaby Street Black Diamond Pendant Necklace, a luxurious masterpiece valued at \$3,000. This opulent necklace features a meticulously crafted square pendant adorned with exquisite black diamonds, totaling 1.83 carats, set on an 18K rose gold chain. The intricate design centers around the captivating contrast of black diamonds against the warm tones of rose gold, creating a harmonious blend of sophistication and allure.

As the pendant gracefully hangs from the 28-inch chain, it becomes a statement piece that seamlessly transitions from day to night. The attention to detail extends to the interior of the pendant, where a signature synthetic ruby graces the piece, adding a subtle touch of distinction. The 28-inch length allows for a versatile and striking presentation, making this necklace an enchanting addition to any ensemble.

Indulge in the radiance of this unique jewelry creation, a manifestation of exquisite craftsmanship and timeless design. Whether worn as a personal indulgence or as a thoughtful gift, the 18K Rose Gold Carnaby Street Black Diamond Pendant Necklace is a symbol of enduring beauty and refined taste. **DONATED BY: Andy Gelbach & Karen Gonzalez**

*Special  
Thanks*

We extend our heartfelt gratitude to each of our generous donors for contributing to our live auction items. Each donated item reflects your commitment to creating memorable experiences for our attendees. Your support has elevated our event and made a significant impact on our cause.

Your commitment to making a difference is truly inspiring, and we are immensely grateful for your dedication to our mission. We are honored to have you as partners in our journey.

# A SPECIAL THANK YOU

## PILLAR SOCIETY

Recognizes major and special gifts from individuals of \$5,000 – \$50,000 or more.

### DIAMOND:

Andy Gelbach & Karen Gonzalez  
Delores Hudson

### PLATINUM:

Jeffrey Bellamy & Craig Coen  
Rich & Debbie Lawson  
Bob & Linda Mickey  
Dr. Aaron & Catherine Rupp\*  
Jeff & Rachel Terry  
Stephanie & Terry Truex  
Drs. Omkar & Anvy Vaidya\*  
Steve & Kristi Westhead

### GOLD:

Guy & Jonna Albert  
Justin & Darinda Dick\*  
Kelly Frankum-Weinberger  
& Morgan Frankum  
Randy Russell & Ann Bailey  
Kevin & Sarah Smarr

### SILVER:

Dr. Jayendra & Sandhya Astik\*  
Dr. Jayne & James Brockhaus\*  
Steve & Nicole Farr  
Dr. Drew & Shannon Glover\*

### BRONZE:

Darin & Hilary Baldwin  
Dr. Robyn Criswell-Bloom  
& Russ Bloom  
Jessica Lee Bowers\*  
Alan & Kathleen Brandt  
Ray & Cindy Burton  
Terry & Karen Caldwell\*  
Barbara Carlyle  
Bill & Gina Carlyle  
Spencer & Tara Carlyle\*  
Dr. Ashley Alumbaugh  
& Jacob Cottrill\*

### BRONZE (CONTINUED):

Christopher & Jennifer Courter\*  
Mollie Dinwiddie  
Paul & Sue Engelmann  
Patty Eschliman\*  
Stacey & Holly Fitterer  
Dr. Lynn Birchmier & Steven Gee\*  
Drs. Mark Pluym & Amira Ghazali\*  
Dr. Dave & Jan Glover\*  
Bill & Toni Hawley  
Suzanne Holdren  
Todd & Sue Hook  
George & Molly Hout  
Nancy Kenepp  
Matt & Ashley Lotspeich  
Casey & Jessica Lund  
Dr. Brandon & Emily Machicao\*  
John & Carmen Mallery  
Tommie McKinney\*  
Dean Ohmart & Susan Jenkins\*  
David & Teresa Pearce  
Don & Bobbie Riffle  
Dr. Edward & Marie Robison  
Beth Russell  
Charlie & Beth Rutt  
Dale & Luci Smith  
Dr. Stuart & Margo Smith\*  
Jordan & Jennie Snapp\*  
Adam & Amanda Sommer  
Dr. Robert Lawrence  
& Wendy Stallins  
Mike & Lesa Stock\*  
Gary & Linda Turner  
Steve & Renee Twenter\*  
Carl & Rita White  
Doug & Lisa Wickham

### FRIEND:

Dr. Brandon Abbott\*  
Marshall & Jessie Abney

### FRIEND:

Steve & Cathy Abney  
Dr. Muhammad Asif  
& Zertashia Kiran\*  
Patrick & Terri Bradley  
Bob & Kari Bryant  
Jamie Robinson & Clint Carr\*  
Jennifer Corey-Rooney\*  
Jake & Jenny Corson\*  
Aaron & Jessica Craig\*  
Justin & Bailey Eggen\*  
Lacey Bredehoeft-Fiene\*  
Paul Garcia & Patty Gawf-Garcia\*  
Greg & Kim Hall  
Greg Hassler  
Denton Humphrey  
& Janet Bonsall-Humphrey  
Carrie Hutcherson  
Dr. Julie & Drew Lewis  
James & Kimberly Lockard\*  
Jake & Amanda Lotspeich  
Jay & Traci Meldrem  
Jason & Jen Miles\*  
Don & Linda North  
Dennis & Deborah Orr  
Lynda Quistorff  
Matt & Mindy Sargent  
Dan & Michelle Schubert\*  
Michele Shackelford\*  
Aaron & Kristin Shaw\*  
Jerry & Katie Shreve  
Jillian Simmons\*  
Lynn & Mary Solomon  
Dr. Drew & Lindsay Turnbow  
Tony Utt\*  
Doug & Donna Warden  
Rosalee Welling  
Roger & Tina Werneke\*  
Dr. James & Valerie Whiteman  
Dr. Christopher & Megan Wittgren\*  
John & Jennifer Yost

*\*Denotes the 40 WMMC employees who are a part of the Pillar Society*

# COMMUNITY CIRCLE

Recognizes donors who give a recurring, annual gift of \$100 or more. Community Circle members are individuals who take an active interest in the future of healthcare in our communities.

Shirley Albert  
Judith Edmunds  
Karen Hibdon  
Craig & Sherri Hibdon  
Delores Hudson  
Andrew & Susan Kohl  
Kaleb & Hannah McGinnis  
Paula McGinnis  
Iris Metcalf  
Phil & LuRae Shreves  
Herbert Turnbow  
Evelyn Bailey  
Bill & Wendy Bernier  
Sherri & Terry Birkeland  
Michael & Donna Bodenhamer  
Denton Humphrey & Janet Bonsall-Humphrey  
Lonnis Breshears  
Baird Brock  
Virginia Campbell  
Dale & Barbara Carder  
Dr. Justin & Lindsay Chapman  
Ginger Cochran  
Dr. Robyn Criswell-Bloom & Russ Bloom  
Jan Crouch  
Gail Crump  
Michael & Danielle Dulin  
Carolyn Dunham  
Carrie Ewing  
John & Beth Finnane  
Cynthia Gabel  
Dr. David Glover & Jan Glover  
David & Glenda Goetz  
Larry & Karen Haase  
Tyler Habiger  
Natalie Halpin

Buzz Herman  
Walter & Madelyn Hicklin  
Bruce & Mary Howey  
Patty Hudson  
Angelic Huff  
Brian & Kathy Hughes  
Chad & Judith Johnson  
Laurie Larson  
Aja McGinnis  
Ginny McTighe  
Joyce Michael  
Ashley Miller-Scully  
Gary & Christine Moege  
John O'Rourke  
Donald Peterson & Mary Ellen Clevenger  
Jason & Nicole Riek  
Donald & Bobbie Riffle  
Allison Robbins & John Check  
Evan Rupp  
Gavin Rupp  
Dr. Aaron Rupp & Catherine Rupp  
Charlie Rutt & Beth Rutt  
Legal Investigative Services  
John & Tonya Simmons  
Lynn & Mary Solomon  
Duane & Patricia Jo Sterling  
Joy Stevenson & John Sheets  
Linda Stober  
Dr. Drew & Lindsey Turnbow  
Maxine Vinardi  
Frank & Sue Volesky  
Janet Wendleton  
Mason Wirsig  
Charles & Judith Yancey

# LEGACY CIRCLE

Recognizes those individuals who have remembered the WMMC Foundation in their wills or estate plans.

Kenneth & Marian Glazebrook

Elvin & Mary Maloney



# **RAISING THE BAR: ELEVATING CARE TO NEW HEIGHTS**

CAPITAL CAMPAIGN | 2023- 2024



A large medical PET/CT scanner with a patient bed in a clinical setting.

# CAPITAL CAMPAIGN

## RAISING THE BAR: ELEVATING CARE TO NEW HEIGHTS

The WMMC Foundation has launched its most extensive capital campaign to raise \$1 million to bring innovative technology to our community through Interventional Radiology (IR). This technology uses medical imaging to guide minimally invasive surgical procedures that diagnose, treat, cure, and more. Additionally, WMMC will house the only PET/CT scanner in our region.

**This campaign will elevate the care we provide in three fundamental areas: cancer, stroke, and cardiovascular care.**

### Campaign Highlights:



#### New PET/CT machine

We will bring a new, state-of-the-art PET/CT machine with the latest imaging technology and IR components



#### Jobs & Revenue

This campaign will generate both new job opportunities at WMMC and revenue for the medical center



#### Renovations

A remodeled area to fit this new machine and a new space to serve our Gastrointestinal (GI) patients

# WHAT IS INTERVENTIONAL RADIOLOGY?

According to United Nations population estimates, 16% of the world's population will be older than 65 by 2050, indicating a rising need for safer, more efficient, and less expensive medical procedures. Interventional Radiology (IR) is an exciting and growing medical specialty that enables doctors to:

- Perform surgical procedures to diagnose
- Treat and cure a variety of conditions in a minimally invasive way
- Use a combination of catheter-based procedures and imaging technology, such as ultrasound and digital X-ray, to diagnose and treat disease
- Focus on blood vessels and the lymphatic system
- Treat a wide range of conditions from cancer to infertility
- Offer an alternative to procedures that once required open surgery

## IR APPLICATIONS

From a single incision, interventional technologists and radiologists can work together to:

- Find and stop internal bleeding
- Locate and treat uterine fibroids
- Remove blockages (biliary drainage)
- Unblock blood vessels and arteries (angioplasty)
- Eliminate tumors (thermoablation)



## BENEFITS FOR PATIENTS

Benefits of interventional radiology for patients compared to traditional surgery include:

- Increased effectiveness
- Reduced risks
- Outpatient vs. inpatient Stay
- Lower costs
- Less pain and quicker recovery times

# MEET THE MACHINE

## GE DISCOVERY 710 16 SLICE PET/CT SCANNER



## WHAT IS A PET/CT MACHINE?

A positron emission tomography (PET) scan is an imaging test that can help reveal your tissues and organs' metabolic or biochemical function. The PET scan uses a radioactive drug called a tracer to show both typical and atypical metabolic activity. A PET scan can often detect the atypical metabolism of the tracer in diseases before the disease shows up on other imaging tests, such as computerized tomography (CT).

The tracer is often injected into a vein within your hand or arm. The tracer will then collect into areas of your body with higher metabolic or biochemical activity levels. This often pinpoints the location of the disease.

## WHY IS A PET/CT NEEDED IN OUR COMMUNITY?

A PET scan is an effective way to help discover a variety of conditions, including cancer, heart disease and brain disorders. Your health care provider can use this information to help diagnose, monitor or treat your condition. Currently, there is no hospital in our region that houses an on-site PET machine. Instead, it is common to rent a PET scanner once a week that is housed in a trailer. This will not only reduce the financial burden on our hospital who pays to rent the machine, but will also allow this service to be utilized more than one day a week.

## WHAT SETS THIS MACHINE APART?

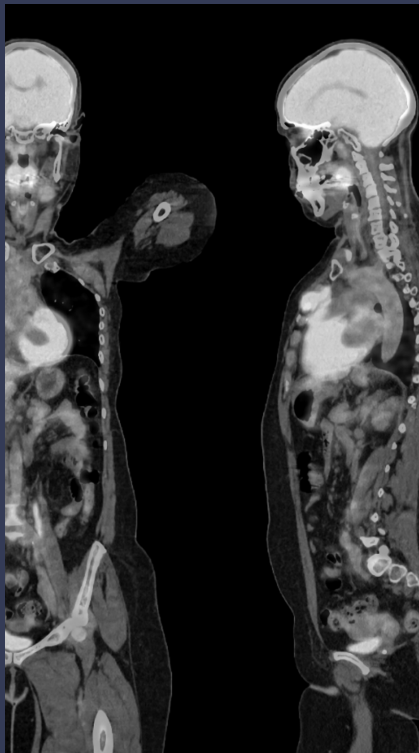
This new scanner is a high-resolution PET/CT scanner with 16-slice image acquisition as well as 2D and 3D imaging capability. This scanner features improved lesion detectability, faster scan times, increased throughput, and reduced dose requirements.

The scanner will allow our providers to:

- Accurately identify tumor boundaries and concentrate radiation only to save viable tissue from radiation exposure
- Detect lesions as small as 2.88 mm (find metastasizing cancer sooner)
- Better scan organs like the lungs and heart
- Accurately detect multiple small lesions in areas of the body subject to movement, especially valuable for breast, lung, colon, renal and prostate cancers

## MAJOR BENEFITS:

- Excellent Movement Management Imaging
- Fast Exam Time
- Seamless Clinical Workflow
- High Quality Images



## COMMON USES OF THE PET/CT

Doctors perform PET/CT scans to:

- Detect cancer and/or make a diagnosis; determine whether a cancer has spread
- Assess the effectiveness of treatment
- Evaluate prognosis
- Assess tissue metabolism and viability
- Determine the effects of a heart attack myocardial infarction on areas of the heart
- Identify areas of the heart muscle that would benefit from angioplasty or coronary artery bypass surgery
- Evaluate brain abnormalities, such as tumors, memory disorders, seizures and other central nervous system disorders
- Map normal human brain and heart function

# HOW YOU CAN HELP

**BECAUSE WE VALUE EVERY GIFT SO GREATLY, WE OFFER MANY WAYS TO GIVE. FIND THE GIFT THAT'S RIGHT FOR YOU.**

- Annual Donations
  - Gifts of current assets provide essential support to our programs and initiatives. These may include cash gifts (check, credit card, wire transfer, IRA charitable qualified distributions), stocks, and bonds
- Memorials & Grateful Patient Donations
  - Many families decide to establish a memorial for their loved one and direct gifts in lieu of gifts or flowers
  - Grateful Patient donations can be made to thank a nurse, doctor, or other staff person at WMMC for their exceptional care
- Legacy Giving
  - When you make a planned gift to the WMMC Foundation, you support the future of quality health and care in our community.
    - Gift of Securities
      - Redirect your taxes to benefit your family and your community
    - Gift by bequest or estate plan
      - Include the WMMC Foundation in your will or living trust, or name the WMMC Foundation as a beneficiary of a retirement plan or life insurance policy
- Corporate Giving and Event Sponsorship

---

Checks, securities, deeds, bequests, and other legal documents should be made payable or transferable to Western Missouri Medical Center Foundation. The WMMC Foundation is certified as a 501(c)(3) and 509(a)(3) organization. Gifts are tax-deductible to the fullest extent of the law. For additional questions, please contact Jennie Snapp, Foundation Director, at (660) 262-7464 or [jsnapp@wmmc.com](mailto:jsnapp@wmmc.com).

Please mail your donation to:

Western Missouri Medical Center Foundation  
Attn: Communications & Development Office  
403 Burkarth Road  
Warrensburg, MO 64093

**SCAN ME**



**TO GIVE ONLINE**

## **Celebrating Our Progress: Over Halfway to Our Goal**

We're thrilled to announce that we've reached a significant milestone by raising over half of our \$1 million goal through the "Raising the Bar: Elevating Care to New Heights" capital campaign. However, our journey isn't complete without your continued support. By the end of this year, WMMC will house the region's only stationary PET/CT scanner, replacing the need for a mobile unit shared by multiple other hospitals. This advancement will significantly impact stroke, cardiology, and cancer care in our community.

## **Join Us in Elevating Healthcare in Our Community**

This gala is the defining final push to make our innovative care vision a reality. Your support plays a pivotal role in transforming our innovative care vision into a tangible and impactful reality. This gala, our organization's largest fundraiser, serves as the defining final push that propels us toward achieving our ambitious goals in revolutionizing the way we deliver care. Your unwavering support not only fuels the momentum behind this transformative vision but also signifies a commitment to shaping the future of healthcare.

For further details about our capital campaign, visit [WMMC.com/RaisingTheBar](http://WMMC.com/RaisingTheBar). Let's come together to celebrate our progress and finish strong!

